



ABTS4

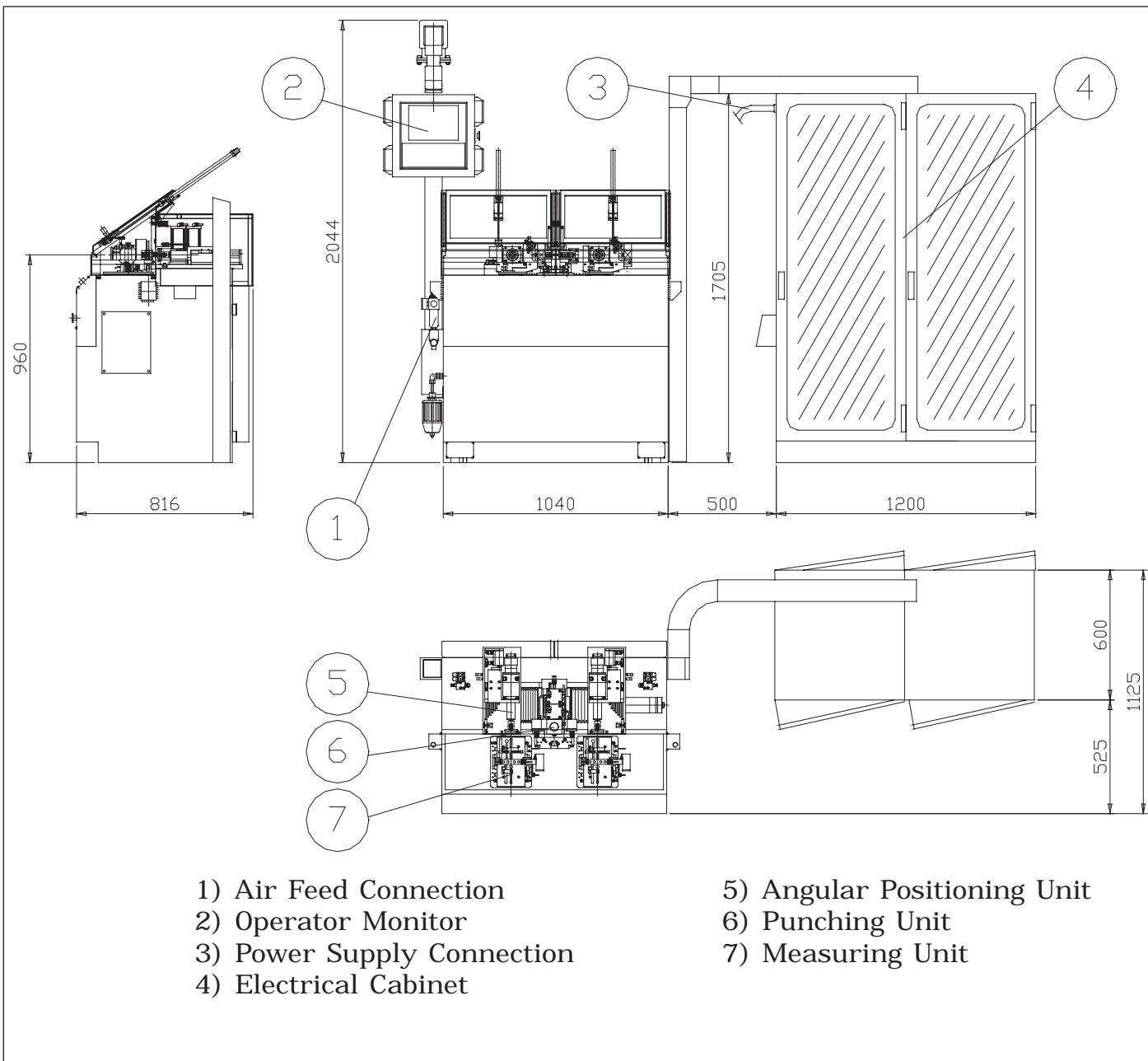
SEMI AUTOMATIC BALANCING MACHINE FOR ASSEMBLED VACUUM CLEANER MOTORS.

Semi automatic balancing machine for assembled vacuum cleaner motors.
Machine complete with: unbalance measuring unit, automatic impeller angular positioning, punching unit to compensate the unbalance by removing material from the impeller. Double stations machine.
The two stations can work simultaneously. The ABTS4 Balancing Machine needs only one operator.
Machine easy to install and to utilize.
The ABTS4 Balancing Machine can be tooled for many different types of assembled vacuum cleaner motors.



- > High measuring precision
- > High balancing precision
- > Users friendly
- > Fast change over
- > Load/unloading of the assembled vacuum cleaner motor during masked time.





Technical data	Option
Workable parts:	Vacuum cleaner unit to remove the punching chips
Max weight of the parts 4kg	SPC software and printer
Minimum impeller diameter 60mm	Milling unit to balance the second plane
Maximum impeller diameter 140mm	Automatic electric connection
Cycle time (one plane) 14 sec.	
Cycle time (two plane) 18 sec.	
Controlled by Microprocessor	
Motor power supply Programmable from 50-240 volts	
Sensitivity 0,1gmm. Max	
Balancing method Removing by punching	
Machine dimensions (mm) 1200 x 1375 x 2000	
Machine Weight 1200 kg.	

Specifications may be subject to changes without notice © 2002 By Balance Systems – Printed in Italy M0130E



Balance Systems s.p.a.
 via Ruffilli, 2/4
 20060 Pessano con Bornago
 (Milano) Italy
 Tel. +39.029 504 955
 Fax +39.029 504 977
 E-mail: info@balancesystems.it
 www.balancesystems.com



Balance Systems